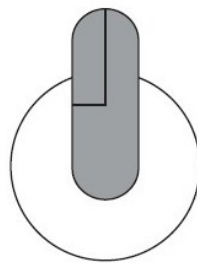
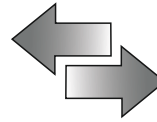


# はずる<sup>TM</sup> HUZZLE<sup>®</sup>

## Huzzle Cast Donuts



Assembled

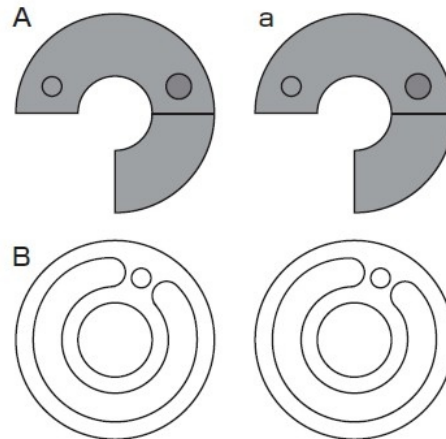
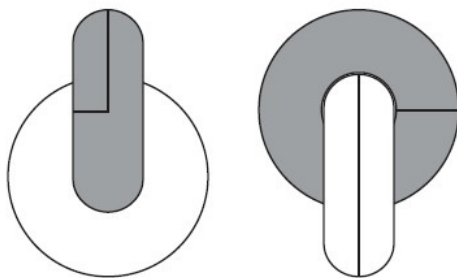


Disassembled

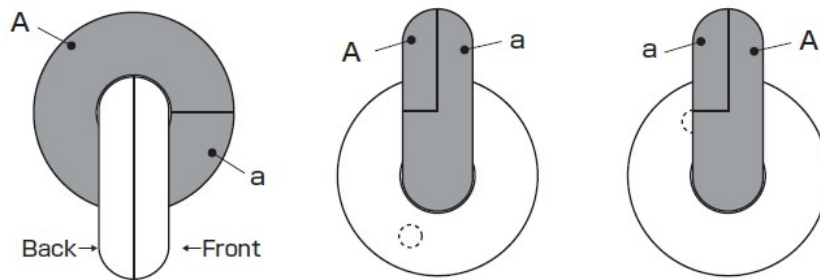
Black : A

Silver : B

The donuts are made from these identical shapes. "Donuts" is written on the donuts marked "a."



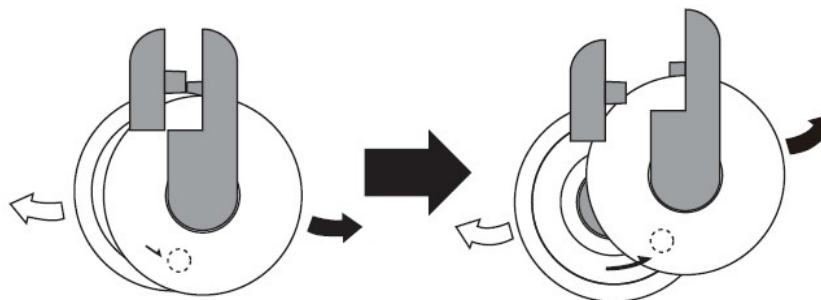
- Match up the inner pieces (marked with a circle) on "B" with the separation line. At this moment, the inner pieces on "B" is located at an angle of 180 degrees to each other.



Viewed from the front.

Viewed from the back.

- Slide in the direction of the arrows to unlock the donuts.



\*Do not pull directly sideways. Match up the inner pieces while sliding the donuts to unlock the puzzle.

Designer: Vesa Timonen (FIN)

© 2011, 2018 Hanayama Co., Ltd.  
All Rights Reserved



Exclusive European distribution  
by Eureka bvba - 2800 Mechelen, Belgium